

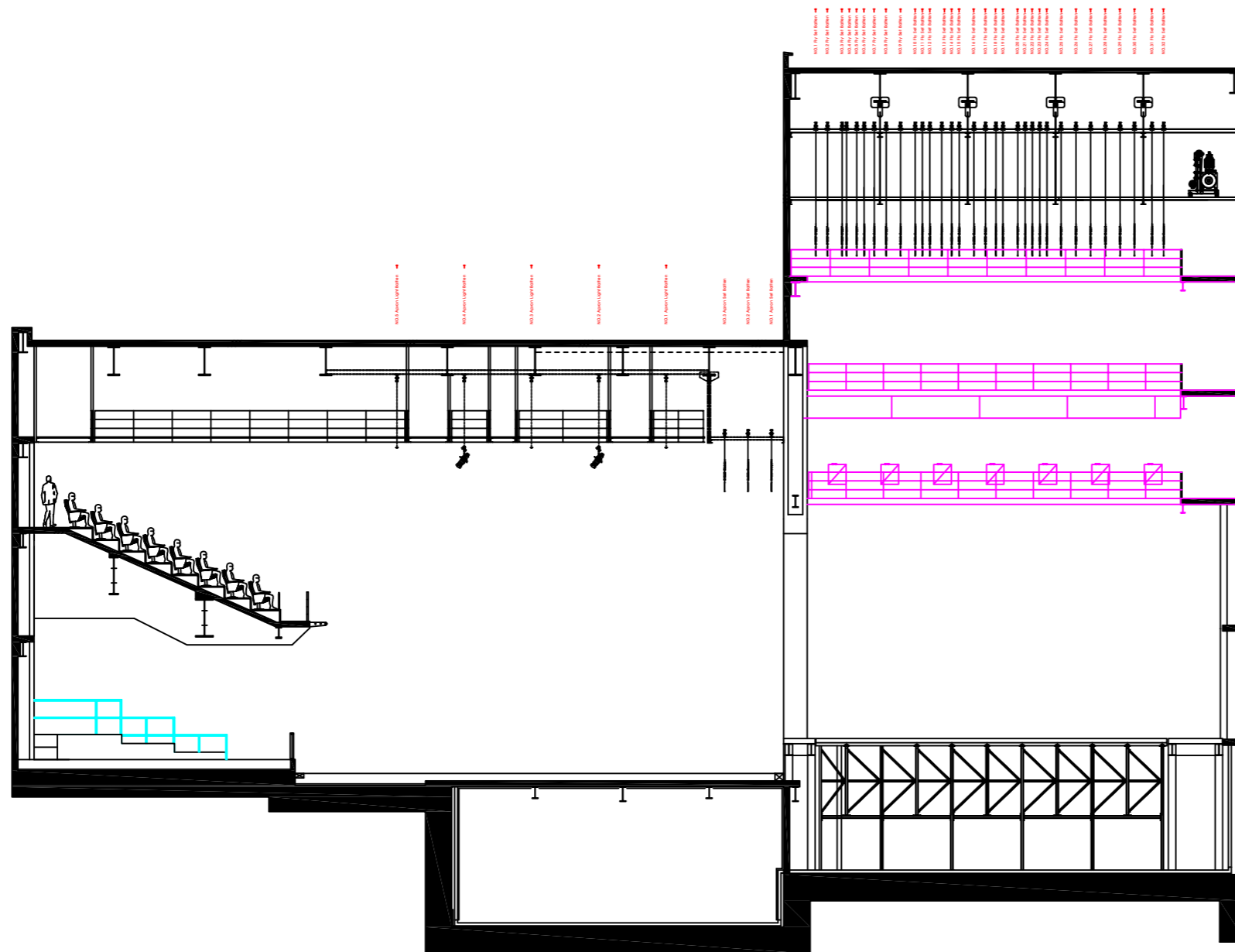
상부 조물 일람표

NO.	NAME	SPEED (M/MIN)	LOAD (kg)	DIMENSION	SET
1	NO.1,3 APRON BATTEN	15	500	17,000L	
2	NO.2 APRON BATTEN	15	500	16,000L	
3	NO.1-5 LIGHT BATTEN	15	500	17,500L	
4	NO.1-18 FLY SET BATTEN	1 - 75	800	24,000L	
5	NO.19 FLY SET BATTEN	15	500	24,000L	
6	NO.20-22 FLY SET BATTEN	1 - 75	800	24,000L	
7	NO.1-6 FREE ONE POINT HOIST	1 - 75	300		

하부 일람표

NO.	NAME	DIMENSION	LOAD (kg)	SET
1	MAIN STAGE DECK	21600 x 10800	700 / 1㎡	
2	STAGE LIFT	6000 x 2700	2000	

* NOTE



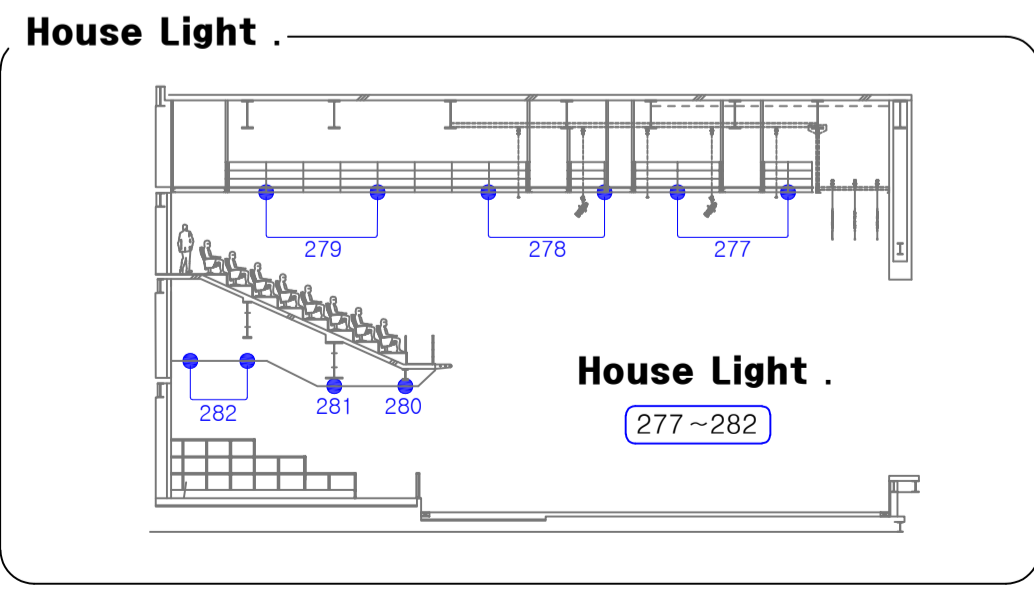
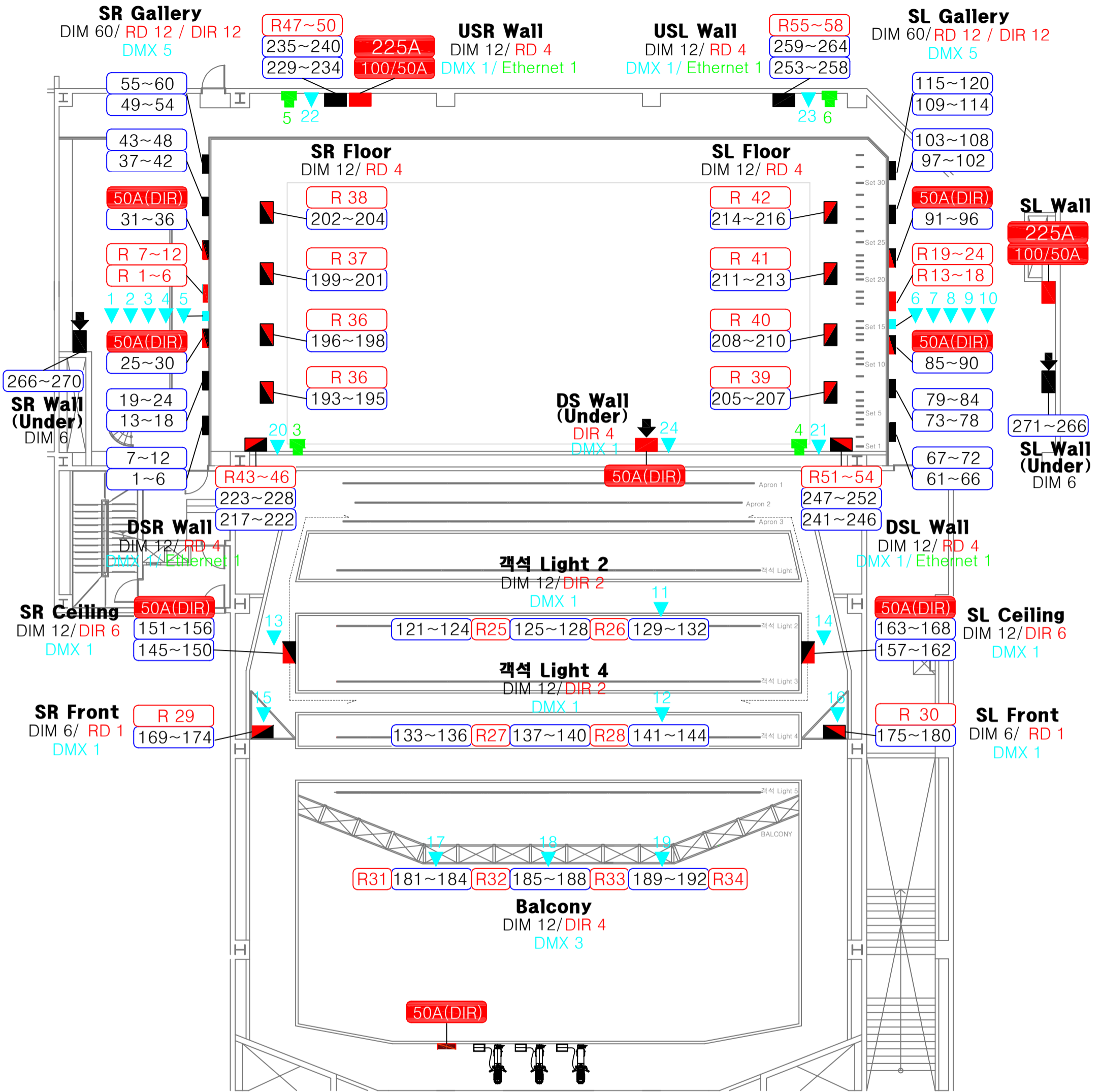
상부 조물 일람표

NO.	NAME	SPEED (MM/MIN)	LOAD (Kg)	DIMENSION	SET
1	NO.1,3 APRON BATTEN	15	500	17,000L	
2	NO.2 APRON BATTEN	15	500	16,000L	
3	NO.1-5 LIGHT BATTEN	15	500	17,500L	
4	NO.1-18 FLY SET BATTEN	1 - 75	800	24,000L	
5	NO.19 FLY SET BATTEN	15	500	24,000L	
6	NO.20-22 FLY SET BATTEN	1 - 75	800	24,000L	
7	NO.1-6 FREE ONE POINT HOIST	1 - 75	300		

하부 일람표

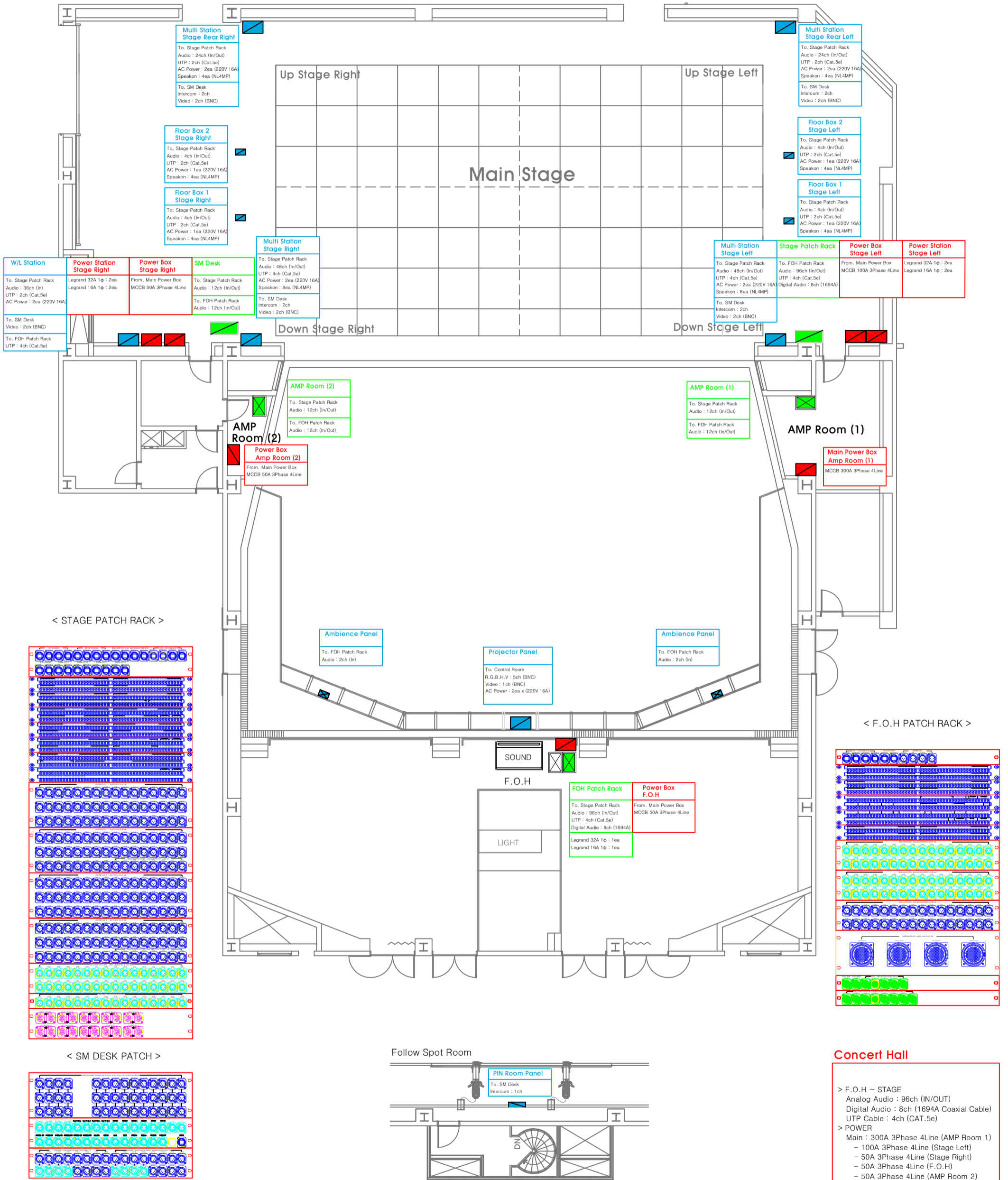
NO.	NAME	DIMENSION	LOAD (Kg)	SET
1	MAIN STAGE DECK	21600 x 10800	700/1㎡	
2	STAGE LIFT	6000 x 2700	2000	

* NOTE



Note.

- 1~288 Dimmer ch no. ▼▲ DMX Port
- R1~ Remote Direct ■ EtherNET Port
- 50A(DIR) MCCB 3P + N (C-Type Outlet) ↓ Under Stage MULTI BOX



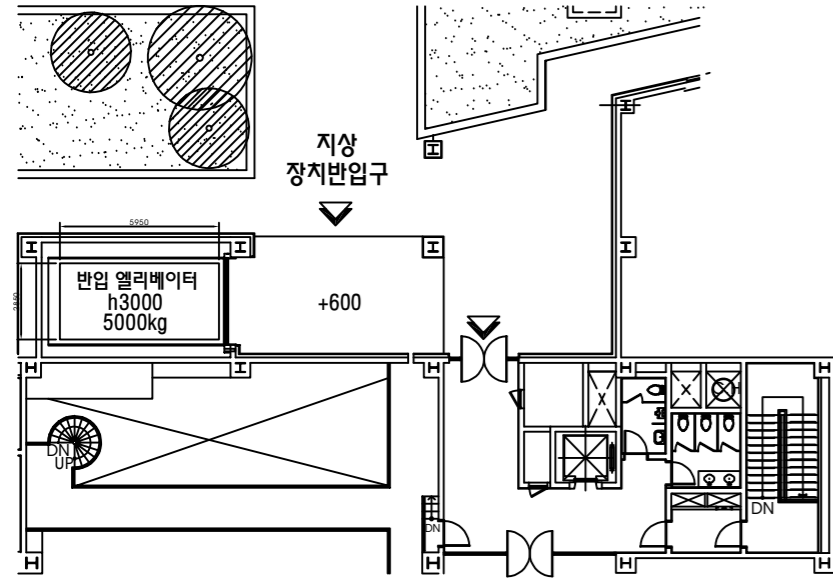
Concert Hall

> F.O.H ~ STAGE
 Analog Audio : 96ch (IN/OUT)
 Digital Audio : 8ch (1694A Coaxial Cable)
 UTP Cable : 4ch (CAT.5e)

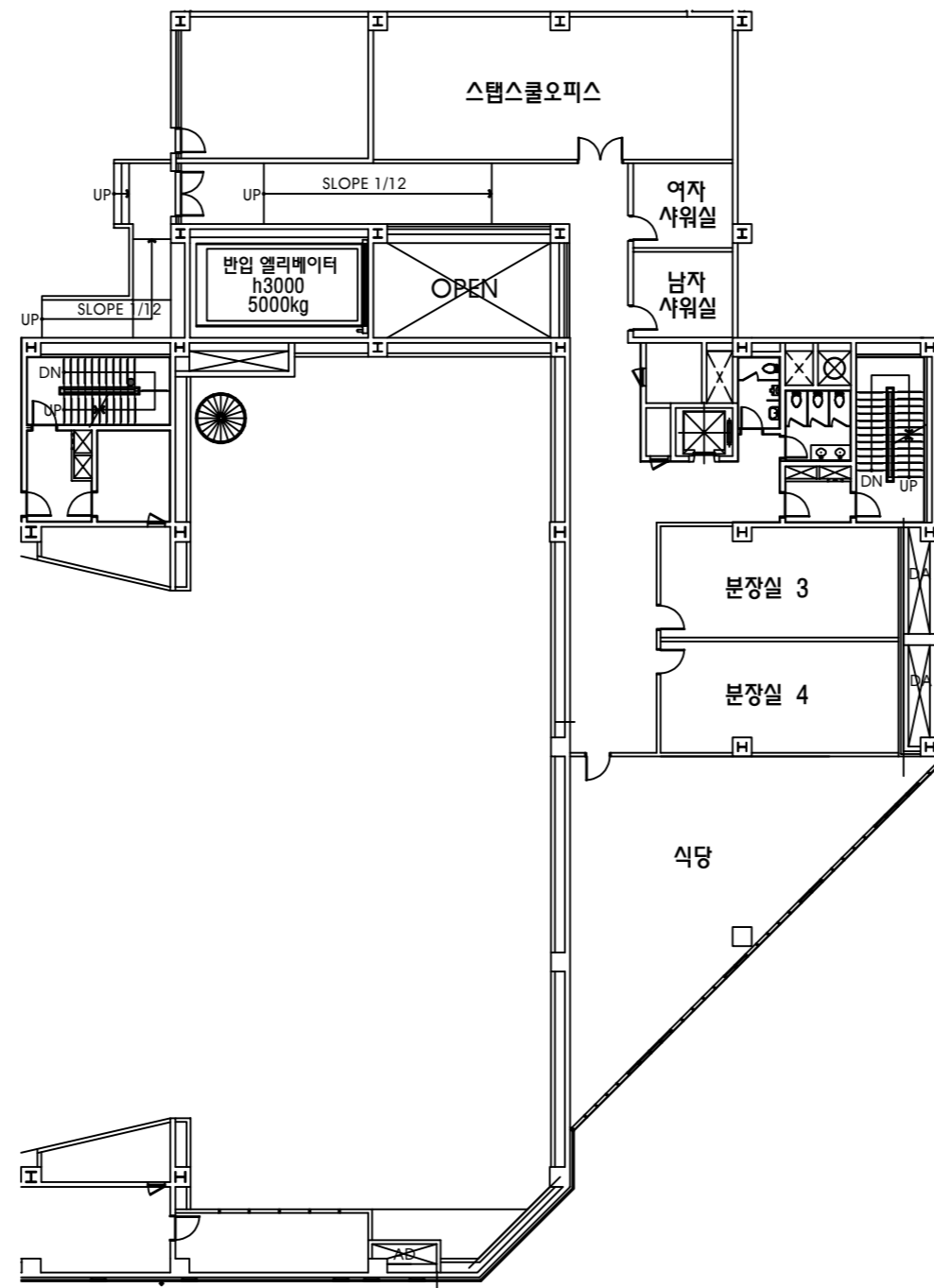
> POWER
 Main : 300A 3Phase 4Line (AMP Room 1)
 - 100A 3Phase 4Line (Stage Left)
 - 50A 3Phase 4Line (Stage Right)
 - 50A 3Phase 4Line (F.O.H)
 - 50A 3Phase 4Line (AMP Room 2)

TITLE	Sound Circuit	SCALE	nts
COMPANY		DESIGNER	
PRODUCER		DATE	2017. 06. 24

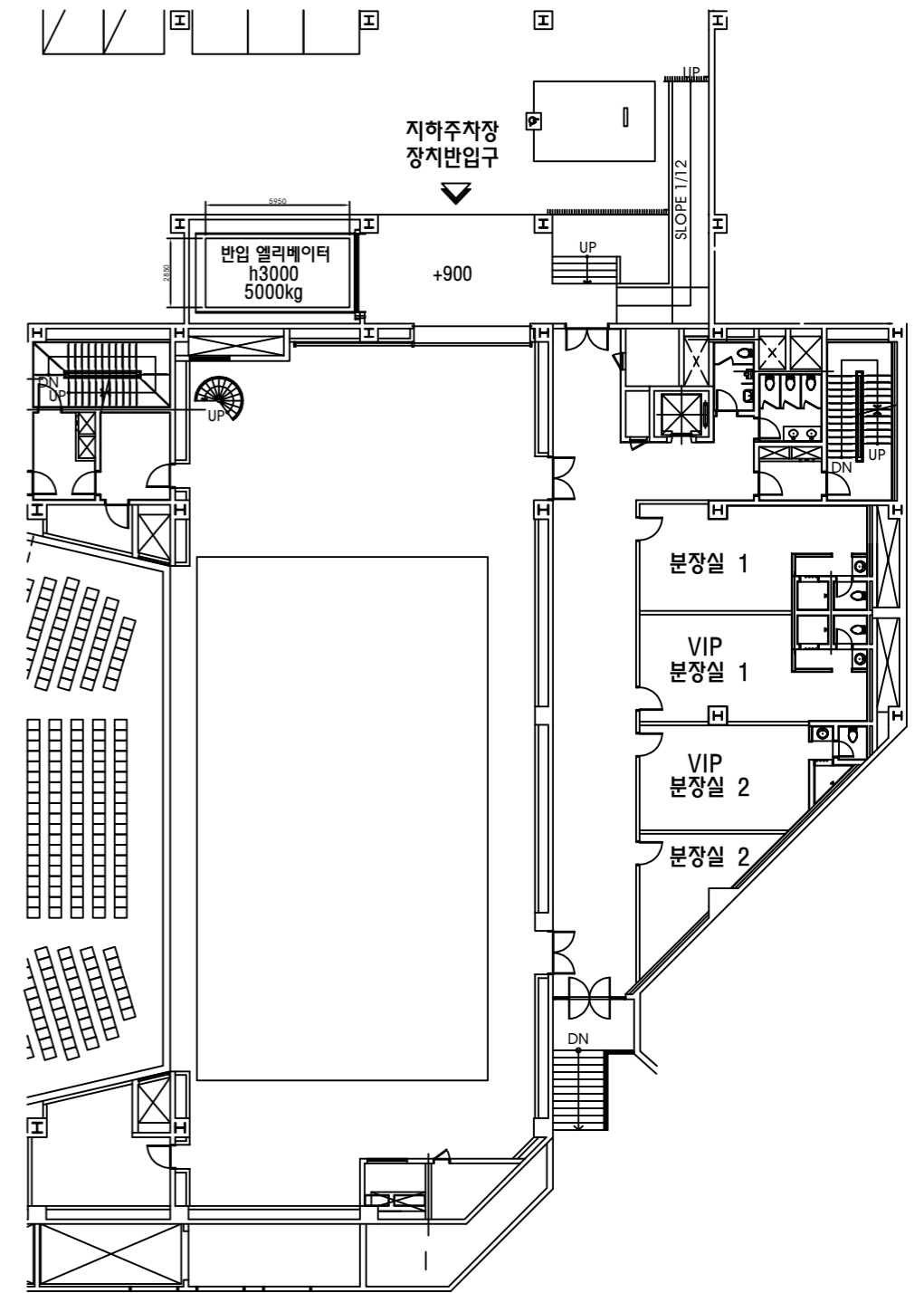
1F (지상주차장)



지하2층



지하3층 (무대)



TITLE	반입구 & 분장실 배치 평면도	SCALE	nts
COMPANY		DESIGNER	
PRODUCER		DATE	2017. 06. 24